



# Golden Triangle Storage Expansion Project

**Open House**  
**December 13, 2023**

# ABOUT CALICHE-GOLDEN TRIANGLE STORAGE

EXPANSION PROJECT



## CALICHE DEVELOPMENT PARTNERS II, LLC.

- Headquartered in Houston, Texas
- Owns Golden Triangle Storage, LLC (GTS), a federally regulated, underground natural gas facility located near Beaumont, Texas
- 25 employees in Beaumont and Houston

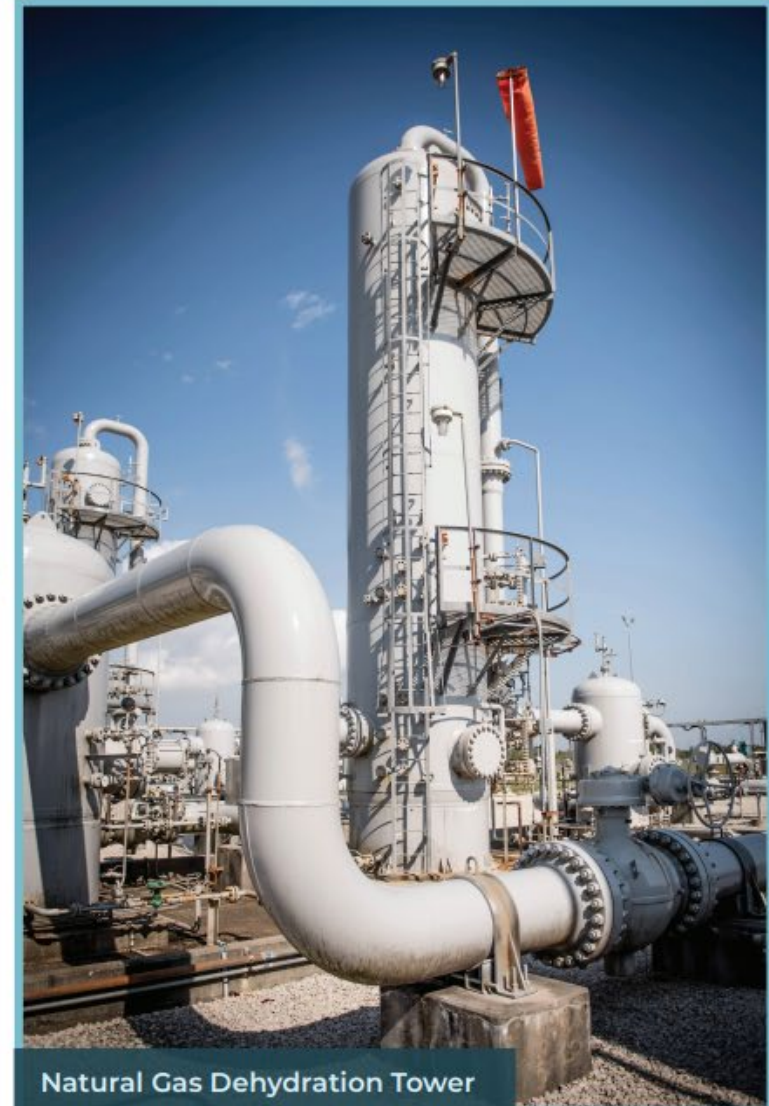


# GOLDEN TRIANGLE STORAGE FACILITY

## EXPANSION PROJECT



Salt Cavern Leaching Plant



Natural Gas Dehydration Tower

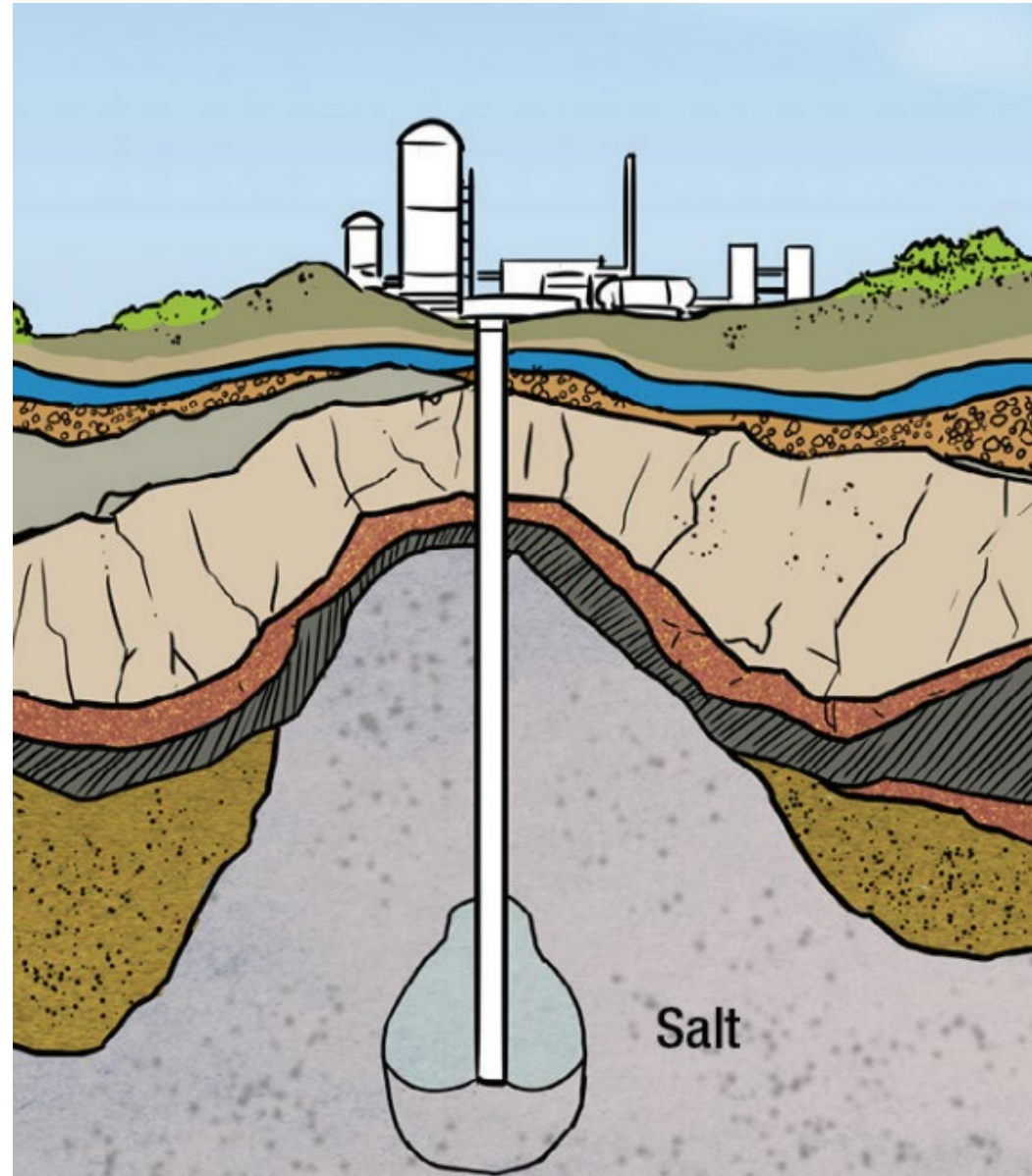


Natural Gas Compressor



Natural Gas Inlet/Outlet Metering

## SALT FORMATIONS



# GOLDEN TRIANGLE STORAGE FACILITY

EXPANSION PROJECT



LOCATION: BEAUMONT, TEXAS

## CAPACITIES

Type: <b>Salt Cavern</b>	Working Gas Capacity: <b>14 billion cubic feet</b>	Maximum Injection: <b>300 million cubic feet per day</b>	Maximum Withdrawal: <b>600 million cubic feet per day</b>
Interconnects: <b>7</b>	Horsepower: <b>3 Caterpillar- Ariel compressors</b>	<b>14,250 HP Total</b>	



# THE PROJECT

## GOLDEN TRIANGLE STORAGE EXPANSION PROJECT



### PROJECT OVERVIEW:

Add approximately 14.4 billion cubic feet of new natural gas storage capacity to the Existing Storage Facilities:

- Two new salt dome natural gas storage caverns (Cavern 3 and Cavern 4)
- Well pad sites for Cavern 3 and Cavern 4
- New facilities related to Cavern 3 and Cavern 4
- A brine disposal well, well pad, and a brine disposal pipeline
- 33,000 horsepower of spark-ignited reciprocating piston engine-driven compression; and
- New service corridors and permanent access roads

# NEED AND BENEFITS

## GOLDEN TRIANGLE STORAGE EXPANSION PROJECT



**The Expansion Project** is needed to satisfy a growing demand for natural gas storage in the Gulf Coast region, as demonstrated by customers' interest in agreements for storage capacity associated with the Expansion Project.

### JOB

The Expansion Project will support approx. 50 workers at the peak of site construction. GTS anticipates hiring one additional permanent employee.

### REVENUES

The Expansion Project will require approx. \$87 million in expenditures on raw materials, equipment, and rentals, stimulating economic activity in the project area.

### TAXES

Direct and indirect economic activity will increase state revenues via sales and income tax.



**Figure 1.1-1.**  
**GTS Expansion**  
**Project General**  
**Location Map**

- Legend**
- Central Storage Site
  - Proposed Brine Disposal Well
  - Existing Brine Disposal Pipeline
  - Proposed Brine Disposal Pipeline

Jefferson County, TX  
 USGS 7.5' Quadrangle:  
 Beaumont East, TX, 30094-A1  
 NAD 1983 UTM Zone 15N  
 30.027°N 94.0908°W

Scale: 1:50,000

0 2,000 4,000  
 Feet  
 0 2,000 4,000  
 Meters

1:50,000

North Arrow

Map Date: 08/11/2022  
 Date: 08/11/2022  
 Project No.: 75809  
 Layout: 75809\_P1\_1.1\_Location  
 App: 75809\_gdms\_CentralStorageMap.mxd

Golden Triangle Storage  
 CALSH



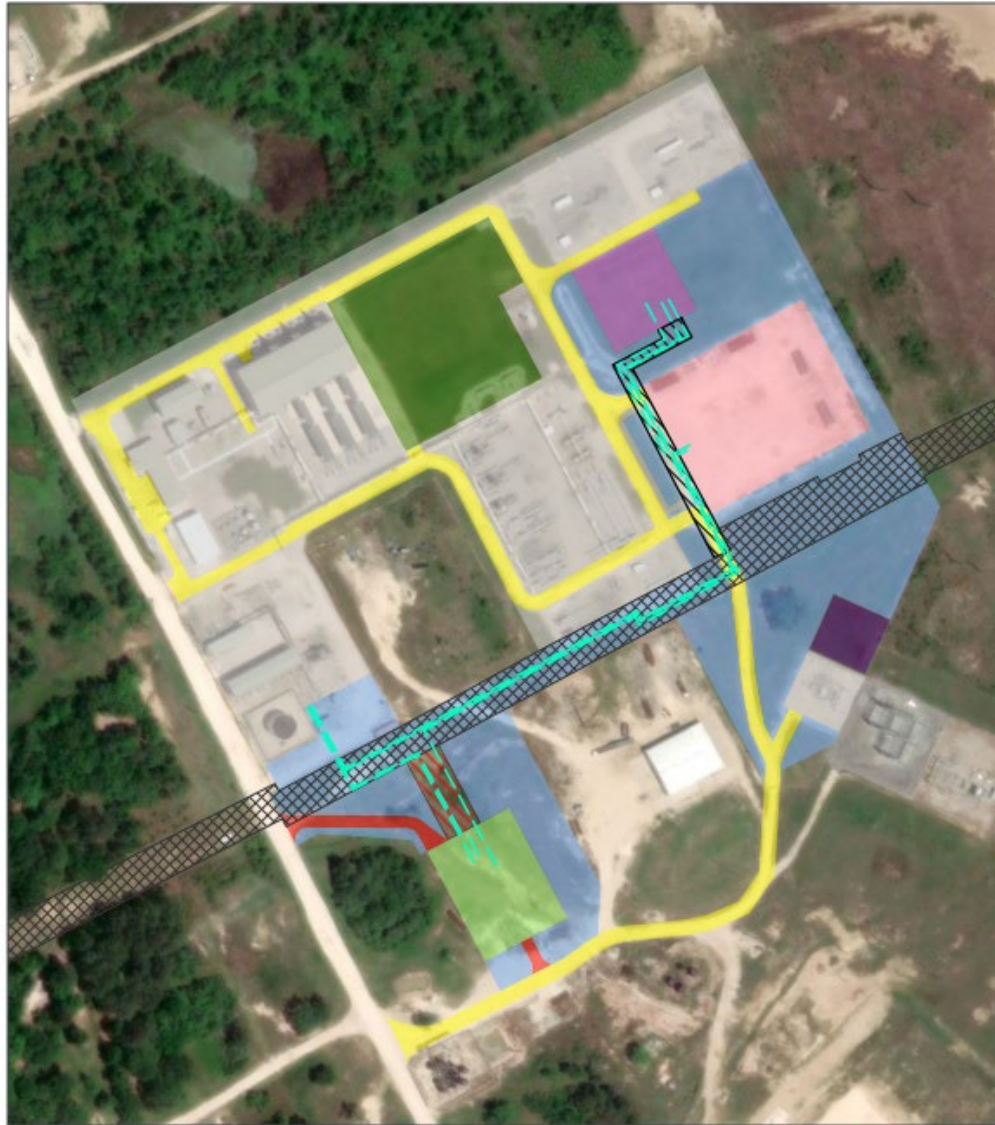


Figure 1.1-3.

**GTS Expansion Project and Existing Facilities on Aerial Imagery**

Legend	
	Temporary - Laydown Areas
	Existing Permanent
	Existing Access Road
	New Access Road
	New Permanent : Cavern 3
	New Permanent : Cavern 4
	New Permanent : Substation - Non-Jurisdictional
	New Permanent : Proposed Service Corridor
	Existing Facility Expansion : Gas Metering, Drying, and Heating
	Existing Facility Expansion : Cad Compression
	New Pipeline
	Existing Pipeline Corridor
	Proposed Service Corridor

Jefferson County, TX  
 USGS 7.5' Quadrangle:  
 Belamont East, TX, 30094-A3  
 NAD 1983 UTM Zone 15N  
 30.0235°N 94.0759°W

Scale: 0 100 200 Feet  
 0 25 50 Meters

North Arrow

1:2,400

Best Map: Best Available Online  
 Accessed August 2023  
 Updated: 02/02/2023  
 Project No: 17080  
 Layout: 10/08/2023 Page 1 of 2 (General)  
 Appn:  
 17080\_gdrn-TriangStoragePropExpPlan.dwg

# PERMITTING

## GOLDEN TRIANGLE STORAGE EXPANSION PROJECT



**The Federal Energy Regulatory Commission (FERC)** regulates interstate natural gas pipeline and storage systems. FERC is responsible for authorizing the construction or expansion of natural gas storage facilities, such as the Expansion Project, and the terms and conditions of service and the rates charged by providers.



# SAFETY

## GOLDEN TRIANGLE STORAGE EXPANSION PROJECT



**The Pipeline and Hazardous Materials Safety Administration (PHMSA)** regulates the safety of natural gas transportation and storage.



In Texas, underground storage is under the authority of the **Texas Railroad Commission – Oil & Gas Division**.



- 133,797 Safe Manhours without a recordable or a First Aid at GTS sites in 2023
- 448 Health, Safety, and Environmental Training hours for GTS employees in 2023

# CONSTRUCTION

## GOLDEN TRIANGLE STORAGE EXPANSION PROJECT



Construction will take place on land controlled by GTS through existing leases, and therefore will not require any new land (state or private property) to be utilized.



Traffic in and around the project location will be minimally affected and no planned detours will be implemented on major public roads or highways.



Construction will take place mainly during daylight hours.



Construction areas will be fenced and downlighting will be used for safety and to minimize visual impacts.



Contractors will be required to have safety plans.